



2019
DES MOINES
PHILANTHROPIC LANDSCAPE

EDEN+

EDENPLUS.ORG

DES MOINES PROFILE

Des Moines
POPULATION:
645,911 ⁽¹⁾

NUMBER OF FIRMS:
16,122 ⁽²⁾

DES MOINES
GDP:
\$57.2 BILLION ⁽³⁾

MEDIAN HOUSEHOLD INCOME: \$67,233
US MEDIAN: \$57,617 ⁽⁴⁾

#1 METRO FOR
COMMUNITY PRIDE ⁽⁵⁾

DES MOINES PHILANTHROPIC INFLUENCERS

7,107

NONPROFIT BOARD MEMBERS



37,927

BUSINESS OWNERS



10,582 BUSINESS EXECUTIVES

303
TRUSTEES

397
HOUSEHOLDS
THAT MANAGE A
PRIVATE FOUNDATION

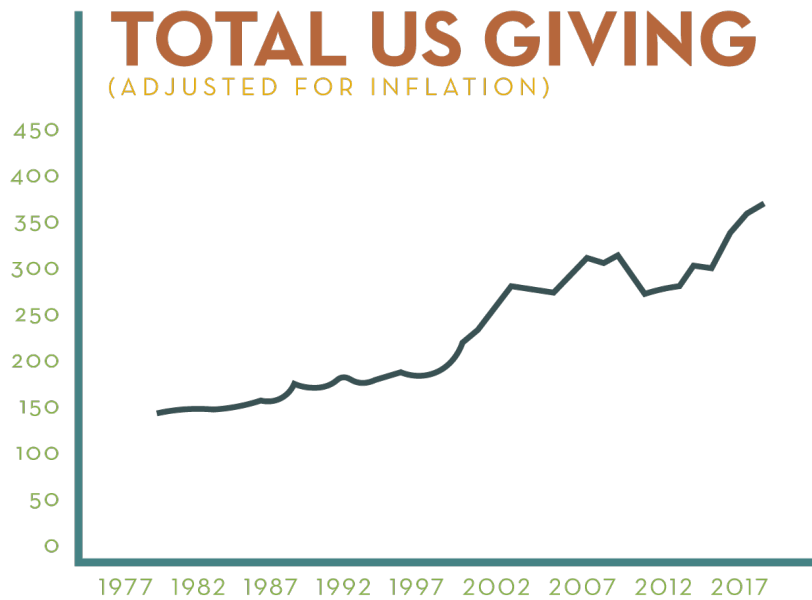
6
HOUSEHOLDS
WITH OVER
\$1 MILLION IN
TOTAL GIVING

68
HOUSEHOLDS
WITH GIFT CAPACITY
OF \$1 MILLION+

(6)

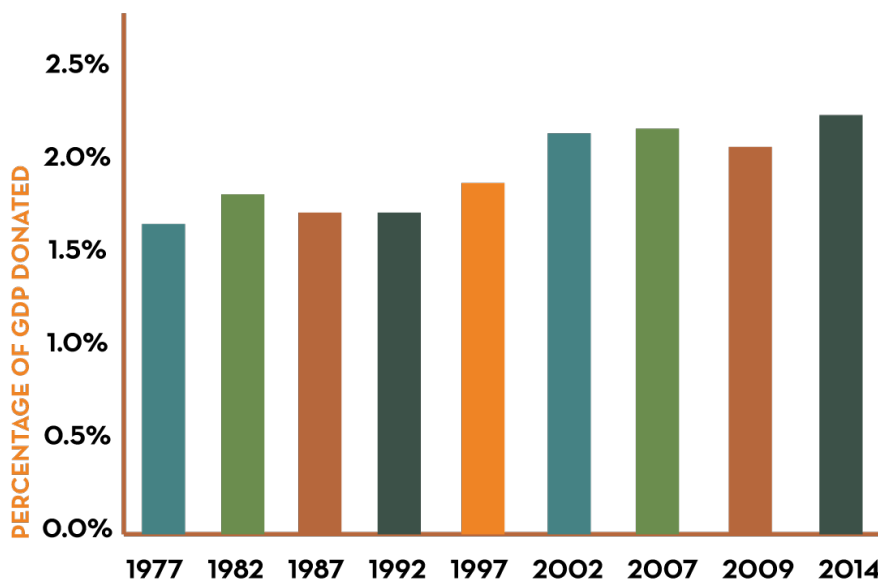
NATIONAL PHILANTHROPIC LANDSCAPE

TOTAL GIVING (2017): **\$410 BILLION**



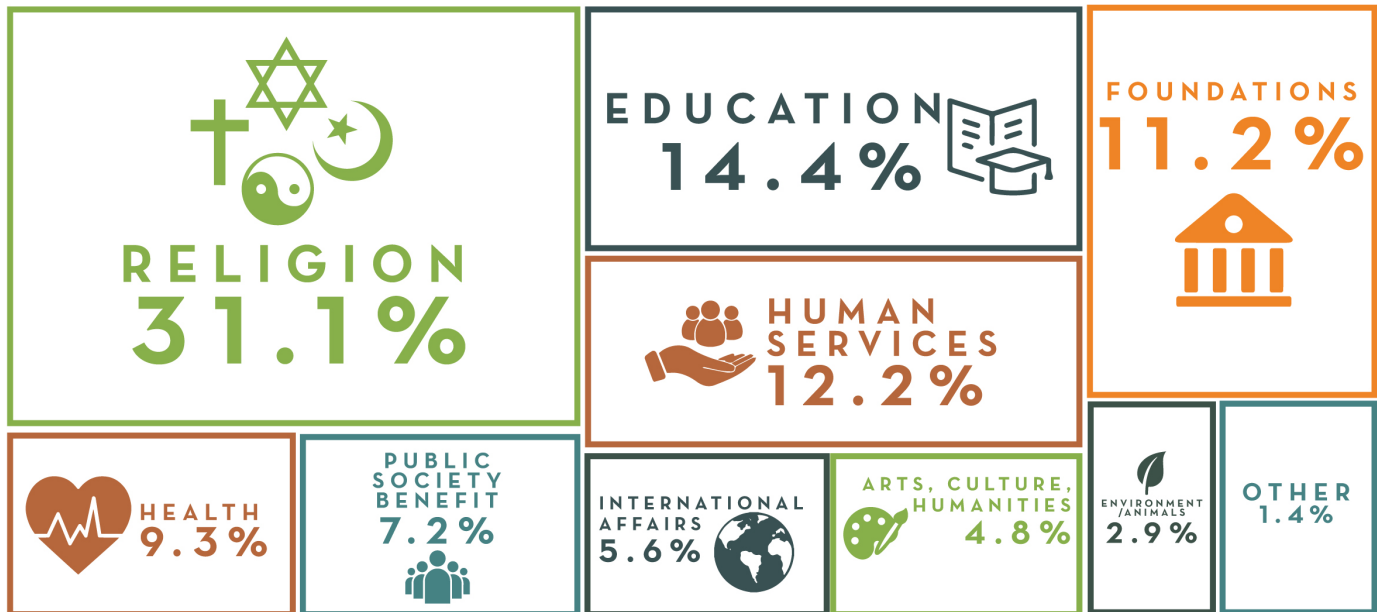
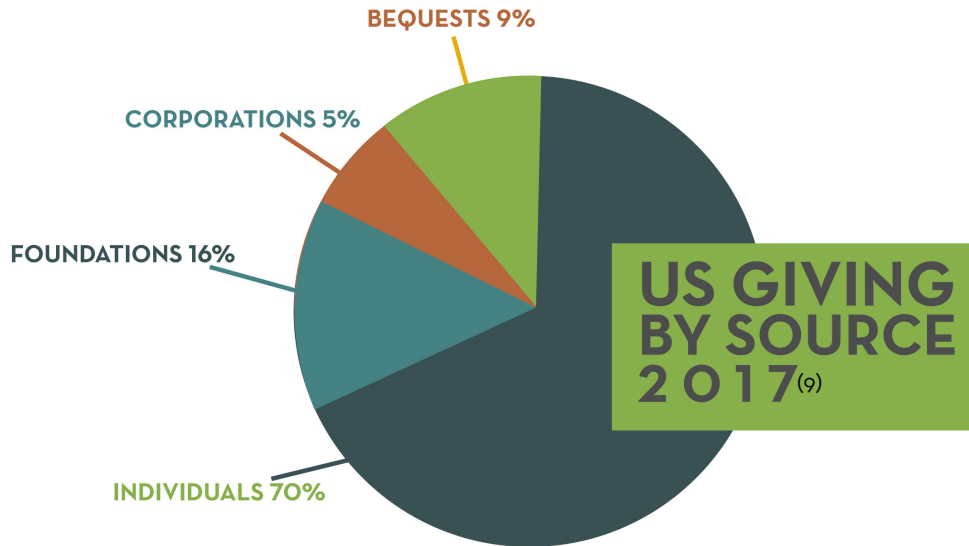
(7)

US GIVING AS A PERCENTAGE OF GDP



(8)

NATIONAL PHILANTHROPIC LANDSCAPE



Giving to foundations saw the largest gains in 2017, increasing 15.5%. The six largest sectors all saw increases in giving in 2017. International affairs was the only sector to experience a decrease in giving.

(10)

DES MOINES NONPROFIT SECTOR

Top 25 Most Influential Boards

1 GREATER DES MOINES PARTNERSHIP	2 UNITED WAY OF CENTRAL IOWA	3 COMMUNITY FOUNDATION OF GREATER DES MOINES	4 BRAVO GREATER DES MOINES	5 VARIETY- THE CHILDREN'S CHARITY
6 ANIMAL RESCUE LEAGUE OF IOWA INC.	7 POLK COUNTY BOARD OF SUPERVISORS	8 PRINCIPAL FINANCIAL GROUP INC.	9 GREATER DES MOINES CONVENTION & VISITORS BUREAU	10 IOWA STATE FAIR BOARD
11 DES MOINES PERFORMING ARTS	12 BLANK CHILDREN'S HOSPITAL	13 YMCA OF GREATER DES MOINES	14 IOWA ASSOCIATION OF BUSINESS & INDUSTRY (ABI)	15 MAKE-A-WISH FOUNDATION OF IOWA
16 PRARIE MEADOWS RACETRACK & CASINO	17 DRAKE UNIVERSITY BOARD OF TRUSTEES	18 CHILDSERVE	19 BOARD OF REGENTS, STATE OF IOWA	20 YOUTH EMERGENCY SERVICES & SHELTER (YESS)
21 AHEINZ57 PET RESCUE & TRANSPORT	22 BLANK PARK ZOO FOUNDATION INC.	23 DES MOINES ARTS FESTIVAL	24 DES MOINES ART CENTER	25 PLANNED PARENTHOOD OF THE HEARTLAND & PLANNED PARENTHOOD VOTERS OF IOWA/PAC

Top 25 Nonprofits (based on budget) in Central Iowa:

ChildServe	Des Moines Performing Arts	Science Center of Iowa
Four Oaks	Children & Families of Iowa	Blank Park Zoo
LifeServe Blood Center	On With Life	Youth Emergency Services and Shelter
Lutheran Services of Iowa	Care Initiatives Hospice	House of Mercy
EveryStep	Link Associates	Anawim Housing
United Way of Central Iowa	Progress Industries	Animal Rescue League of Iowa
Planned Parenthood of the Heartland	Hope Ministries	
Goodwill of Central Iowa	Eyerly Ball Community Mental Health Services	
Iowa Donor Network	Easter Seals Iowa	
Orchard Place	Greater Des Moines Habitat for Humanity	
YMCA	Iowa Public Radio	

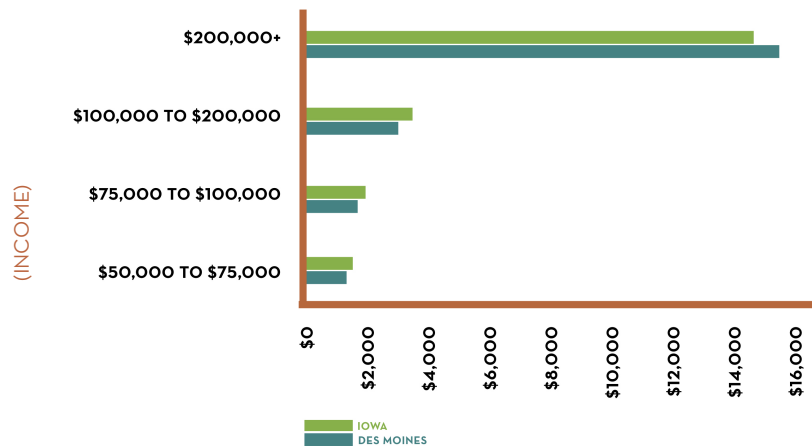
(12)

INDIVIDUAL GIVING IN DES MOINES

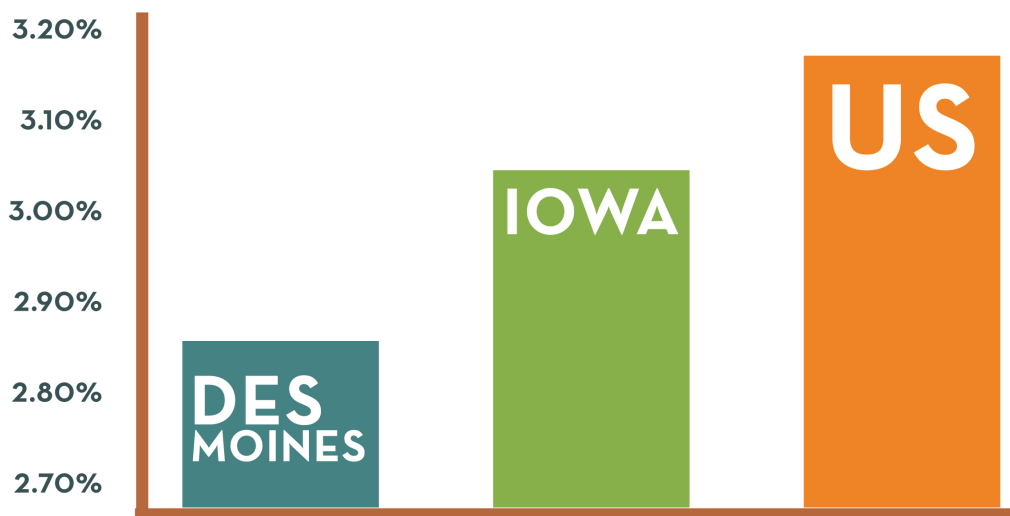
Total individual giving in Des Moines (2015): **\$412,002,000** (13)

Des Moines was named the **7th most generous city** in the US based on percentage of households donating to charities (87%) (14)

COMPARISON OF ANNUAL DONATIONS FOR DES MOINES AND IOWA RESIDENTS (13)



The Chronicle of Philanthropy estimates additional giving potential of \$28 to \$33 million for Des Moines if giving rates matched national and state averages.



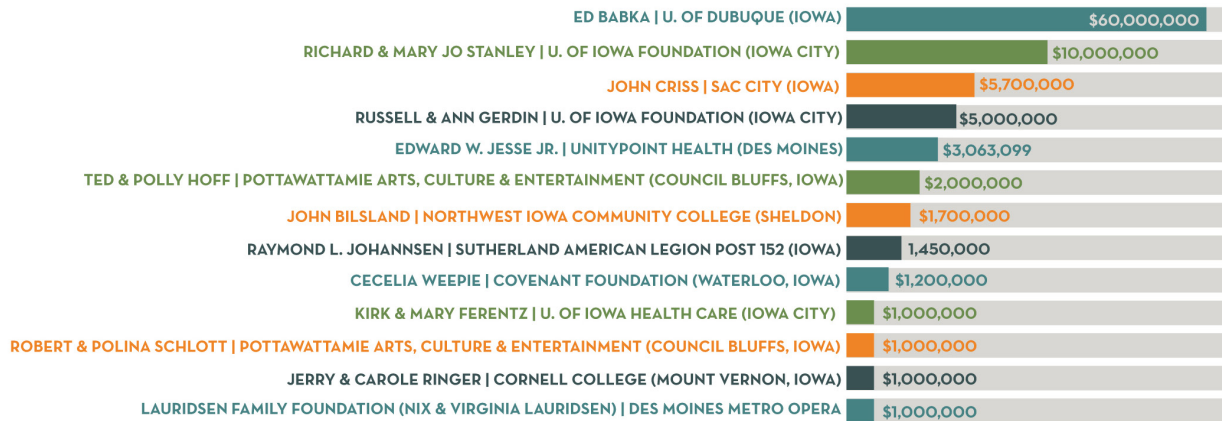
(15)

Since 2000, John and Mary Pappajohn have been the most generous individual philanthropists in Iowa, donating over \$67 million.

Note on individual giving: The Chronicle of Philanthropy estimates giving based on the itemized tax returns of households earning over \$50,000. Therefore, households who report less than \$50,000 in income, or do not itemize, would not be included. Itemized deductions are estimated to capture about 80% of total individual giving.

INDIVIDUAL GIVING IN DES MOINES

A SELECTION OF MILLION DOLLAR GIFTS FROM IOWANS FROM 2017 ⁽¹⁶⁾



DES MOINES HOUSEHOLDS WITH MILLION DOLLAR CAPACITY:



ARTS & CULTURE

25 THAT INCLUDE A MUSIC PLAYER/ENTHUSIAST



HEALTHCARE

2 THAT HAVE INTEREST IN CAUSES RELATED TO DIABETE



HUMAN SERVICES

4 THAT DONATE TO CHILDREN'S CAUSES AND ARE LIKELY TO MAKE A BEQUEST



EDUCATION

37 THAT HAVE COMPLETED COLLEGE



RELIGION

67 WHO HAVE AN IDENTIFIED RELIGION

(17)

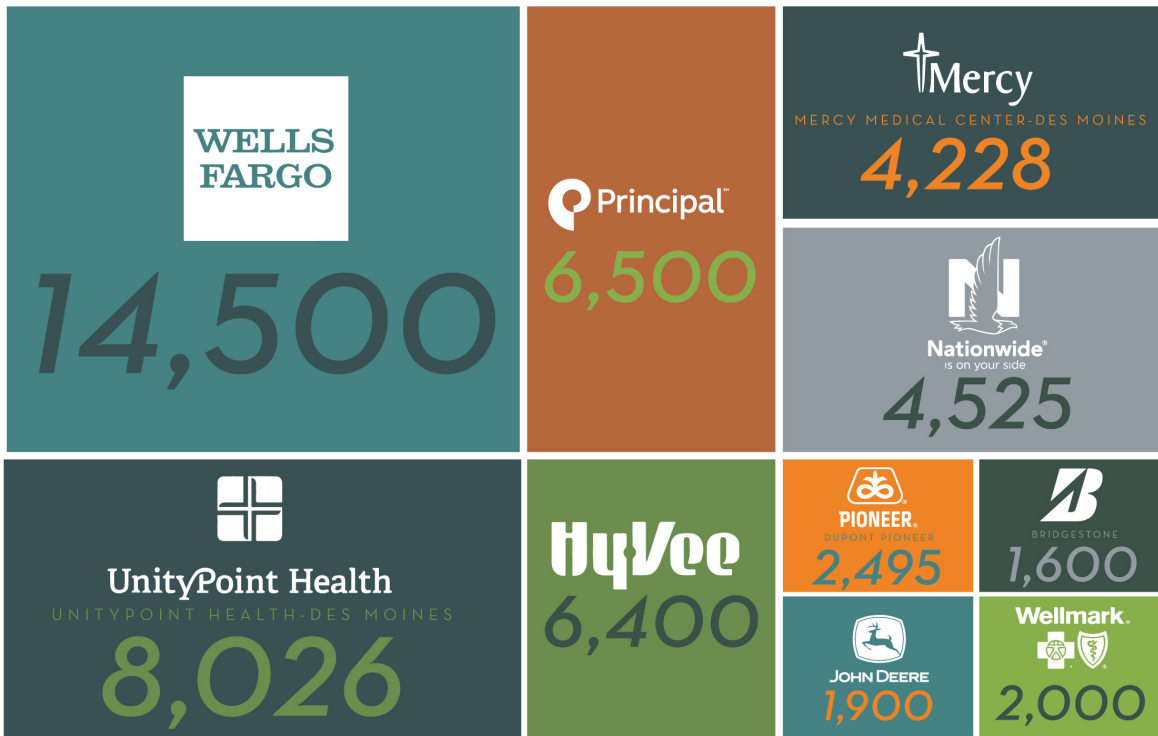
CORPORATE GIVING

#2 CITY FOR JOBS ⁽¹⁸⁾

Three Fortune 500 Companies: Principal, Casey's General Stores, American Equity Investment Life

Key Industries: Advanced Manufacturing; Agbioscience; Data Centers; Insurance/Financial Services; Logistics

LARGEST EMPLOYERS IN DES MOINES



(19)

AFP CENTRAL IOWA CORPORATE PHILANTHROPY HONOREES OVER THE LAST 25 YEARS:

- | | |
|--|---|
| <ul style="list-style-type: none"> Allied Insurance (Nationwide) Anderson Erickson Dairy Banker's Trust Central Iowa Building and Construction Trades Council EMC Insurance Companies Holmes Murphy & Associates Hubbell Realty Company Hy-Vee Iowa Farm Bureau ITA Group Inc. John Deere Kemin Industries Krause Gentle Corp./Kum & Go | <ul style="list-style-type: none"> Merchants Bonding Company Meredith Pella Rolscreen DuPont Pioneer Prairie Meadows Racetrack and Casino Principal Rasmussen Group Sammons Financial Group The Graham Group, Inc. The Principal Charity Classic US Bank Wellmark Willis Auto Campus |
|--|---|

FOUNDATION GIVING



GRANTMAKER	TOTAL ASSETS	TOTAL GIVING
COMMUNITY FOUNDATION OF GREATER DES MOINES	\$336,168,471	\$23,697,906
THE WORLD FOOD PRIZE FOUNDATION	\$55,166,999	\$450,000
THE BRIGHT FOUNDATION	\$41,282,056	\$1,914,683
SEHGAL FOUNDATION	\$37,573,202	\$1,576,565
THOMAS & LINDA KOEHN FOUNDATION	\$31,348,782	\$1,027,250
EDWIN T. MEREDITH FOUNDATION	\$27,852,543	\$910,000
COMFORT FAMILY FOUNDATION	\$20,236,333	\$1,098,000
MID-IOWA HEALTH FOUNDATION	\$16,414,575	\$678,726
STINE FAMILY FOUNDATION	\$15,588,557	\$683,000
WEATHERTOP FOUNDATION	\$14,892,610	\$356,500
THE JOHN R. & ZELDA Z. GRUBB CHARITABLE FOUNDATION	\$11,721,975	\$396,390
KYLE J & SHARON KRAUSE FAMILY	\$11,519,564	\$382,264
OCHYLSKI FAMILY FOUNDATION	\$11,450,089	\$225,000
THE JEFFREY W. GLAZER FOUNDATION	\$10,055,483	\$426,310
CARLSON FAMILY FOUNDATION	\$9,435,464	\$397,500
LINDA GLAZER TOOHEY FOUNDATION	\$8,606,716	\$1,174,739
SUSAN J. GLAZER FOUNDATION	\$8,310,687	\$343,007
KRAUSE GENTLE FOUNDATION	\$7,887,646	\$851,050
W. T. & EDNA M. DAHL TRUST	\$7,531,426	\$965,500
K2 CHARITABLE FOUNDATION	\$7,497,973	\$1,006,500

(21)

EDEN 

EDENPLUS.ORG

515 E. LOCUST ST. STE. 400 | DES MOINES | IOWA | 50309

515-705-3336

DEVELOPMENT ASSESSMENTS | CAMPAIGNS | FEASIBILITY STUDIES | BOARD TRAININGS